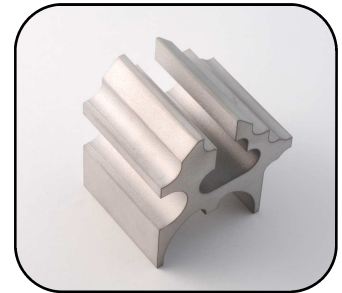
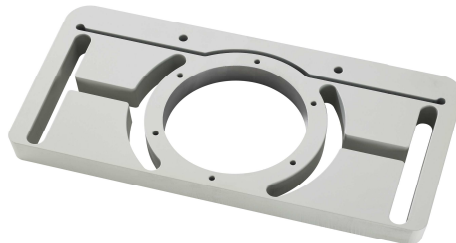
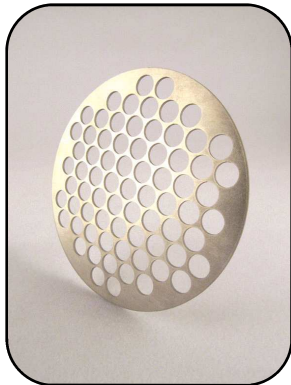




Waterjet Cutting Services

cut anything ... with precision



Need complex cuts? Tolerance and accuracy is within +/- .003" and waterjet cutting leaves no burrs or thermal distortion. With no material hardening or stress, we offer the best nesting ability possible.



With our OMAX® abrasive waterjet MTI can provide complex cutting of virtually any material. This state-of-the-art technology offers flexibility and fast turnaround from prototype to production.

COMPETITIVE COST

- Prototypes, production of limited runs on short notice
- Smooth edges need no secondary processing

ACCURACY & REPEATABILITY

- Precise, intricate shapes with tolerances of $\pm .003$ "
- No burrs, stresses or heat-affected zones

FLEXIBILITY & SPEED

- Production directly from .DXF files, CAD files or scanned images
- Close part nesting assures maximum yield
- Cuts virtually any material

Get the results you need with technology that cuts smooth, precise edges in any two dimensional shape from .DXF files, CAD files or scanned images.

Our abrasive waterjet is perfect for virtually any job requiring maximum material yield with minimal waste.

Call us to discuss your requirements or email your part files for a free quote.

Metal Technology | 173 Queen Ave SE | Albany OR 97322 | USA

Phone: 541.926.9968 | Fax: 541.928.0596

sales@mtialbany.com | www.mtialbany.com

